

SKIPPERS BRIEFING

COASTAL RACE ON MONDAY



**This is a non-committal information and NOT part of the SI.
A protest or request of redress can NOT be based on this information.**

ECKART REINKE
PRINCIPAL RACE OFFICER
WORLD CHAMPIONSHIP 2023

SAFETY REGULATIONS "COMMUNICATION"

BOATS MUST KEEP CONTINUOUS WATCH ON VHF 71



ANY SEVERE DAMAGE OR INJURY/ILLNESS OR A RETIREMENT SHOULD BE REPORTED TO THE RACE COMMITTEE AT THE FIRST REASONABLE OPPORTUNITY (VHF 71 OR +49 431 85023)



ECKART REINKE
PRINCIPAL RACE OFFICER
WORLD CHAMPIONSHIP 2023

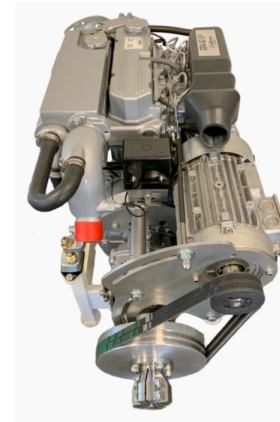
SAFETY REGULATIONS “ENGINE”

DURING THE RACE, BOATS MAY USE THEIR PROPULSION ENGINES FOR THE FOLLOWING PURPOSES:

- REMOVING THE OWN BOAT FROM A DANGEROUS SITUATION OR GROUNDING.
- HELPING OTHER BOATS IN DANGER.

THERE SHALL BE NO PENALTY IF THE BOAT GAINED NO ADVANTAGE
(DETAILS SEE SAILING INSTRUCTIONS)

ALL START AND STOP TIMES OF THE ENGINE MUST BE DOCUMENTED AND SHALL BE REPORTED AFTER ARRIVAL TO THE RACE COMMITTEE STATING THE REASONS FOR SUCH PROCEDURE BY USING THE ONLINE FORM AVAILABLE ON THE EVENT SITE



ECKART REINKE
PRINCIPAL RACE OFFICER
WORLD CHAMPIONSHIP 2023

SAFETY REGULATIONS “LIFE VEST”

COMPETITORS’ ATTENTION IS DRAWN TO RRS 1.2 LIFE-SAVING EQUIPMENT:
“EACH COMPETITOR IS INDIVIDUALLY RESPONSIBLE FOR WEARING A
PERSONAL FLOTATION DEVICE ADEQUATE FOR THE CONDITIONS.”



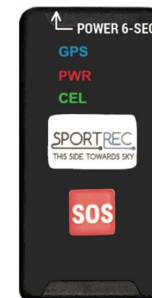
ECKART REINKE
PRINCIPAL RACE OFFICER
WORLD CHAMPIONSHIP 2023

SAFETY REGULATIONS “EQUIPMENT”

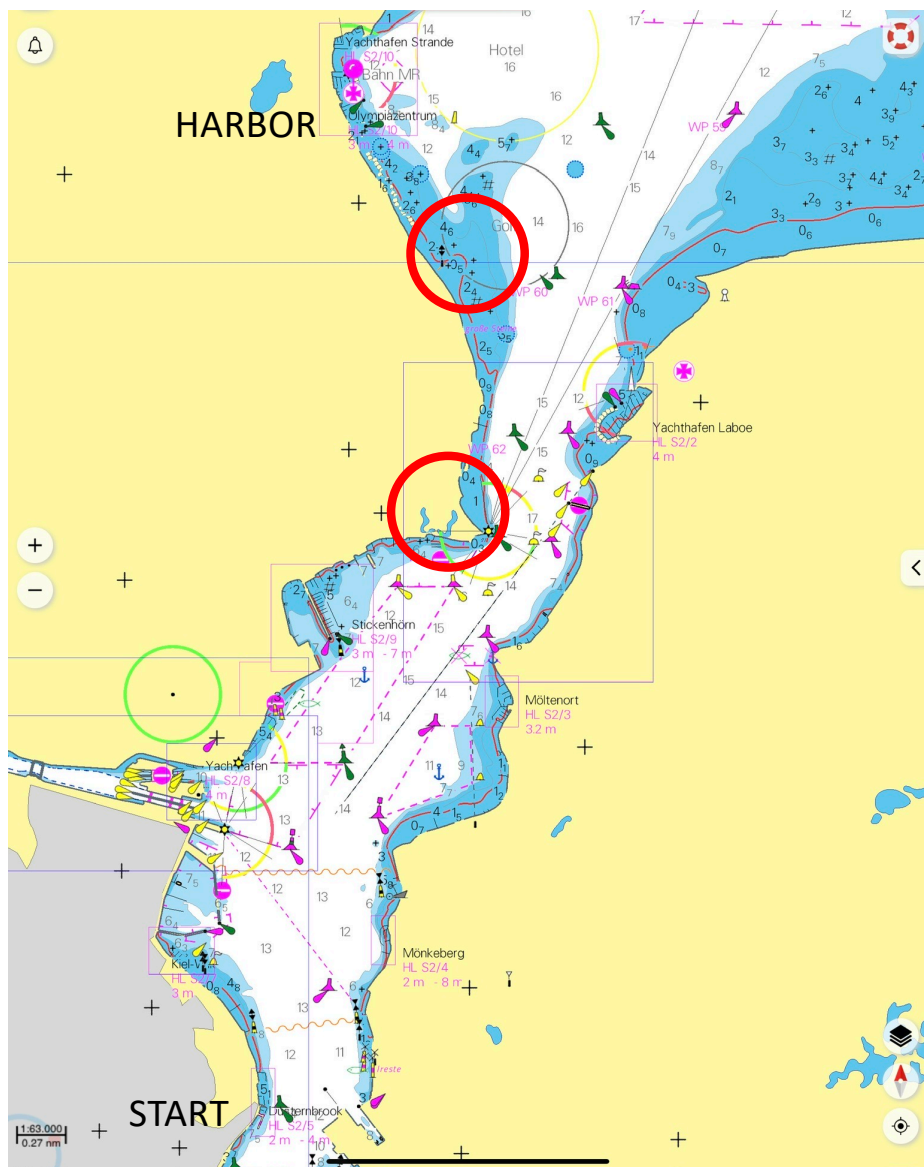
[SP] [NP] COMPETITORS SHALL USE THEIR BEST ENDEAVORS TO ENSURE THAT THEIR AIS TRANSPONDER IS ALWAYS SWITCHED ON



[DP] THE TRACKER MUST BE SWITCHED ON



ECKART REINKE
PRINCIPAL RACE OFFICER
WORLD CHAMPIONSHIP 2023



FROM THE HARBOR TO THE STARTING AREA

YOU NEED TO NAVIGATE ALL THE TIME !

THERE MAY BE AREAS OF SHALLOW WATERS FROM START TO FINISH, AND EVEN BEFORE THE START AND AFTER FINISHING. (ESPECIALLY WATCH OUT AT THE RED MARKED LOCATIONS)

LEAVE THE HARBOR EARLY:

- STARING IN FRONT OF THE KIELER YACHT-CLUB MAYBE THE CHANCE OF BEST PICTURES OF YOUR BOAT DURING THE WORLDS (IF YOU HAVE SPONSORS)
- YOU NEED SOME EXTRA TIME FOR YOUR SECURITY CHECK
- GET USED TO THE STARTING LINE



ECKART REINKE
 PRINCIPAL RACE OFFICER
 WORLD CHAMPIONSHIP 2023



THE STARTING LINE

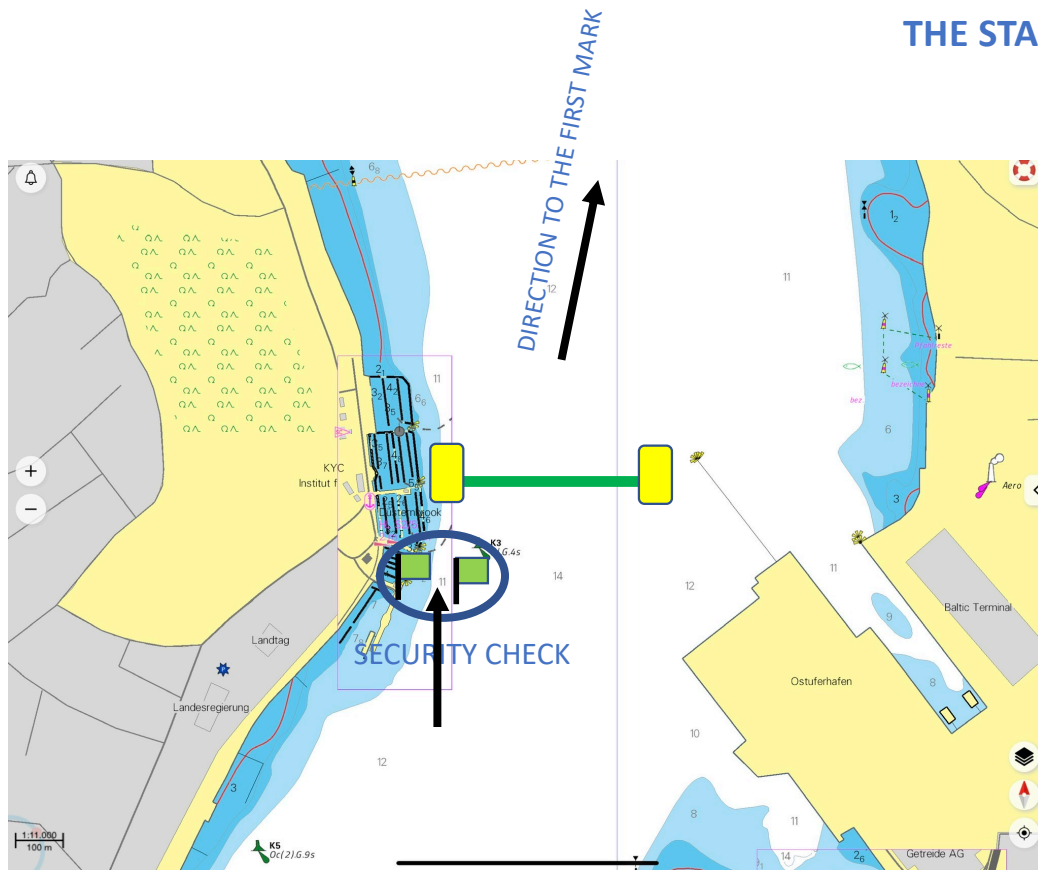
THE STARTING LINE IS THE BEARING OF THE TWO TRIANGLES.

THERE ARE BOUYS WITH LIMITING THE STARTING LINE TO THE SIDE.
THESE BOUYS MAY BE LOCATED OUTSIDE THE BEARING OF THE STARTING LINE.



ECKART REINKE
PRINCIPAL RACE OFFICER
WORLD CHAMPIONSHIP 2023

THE STARTING AREA

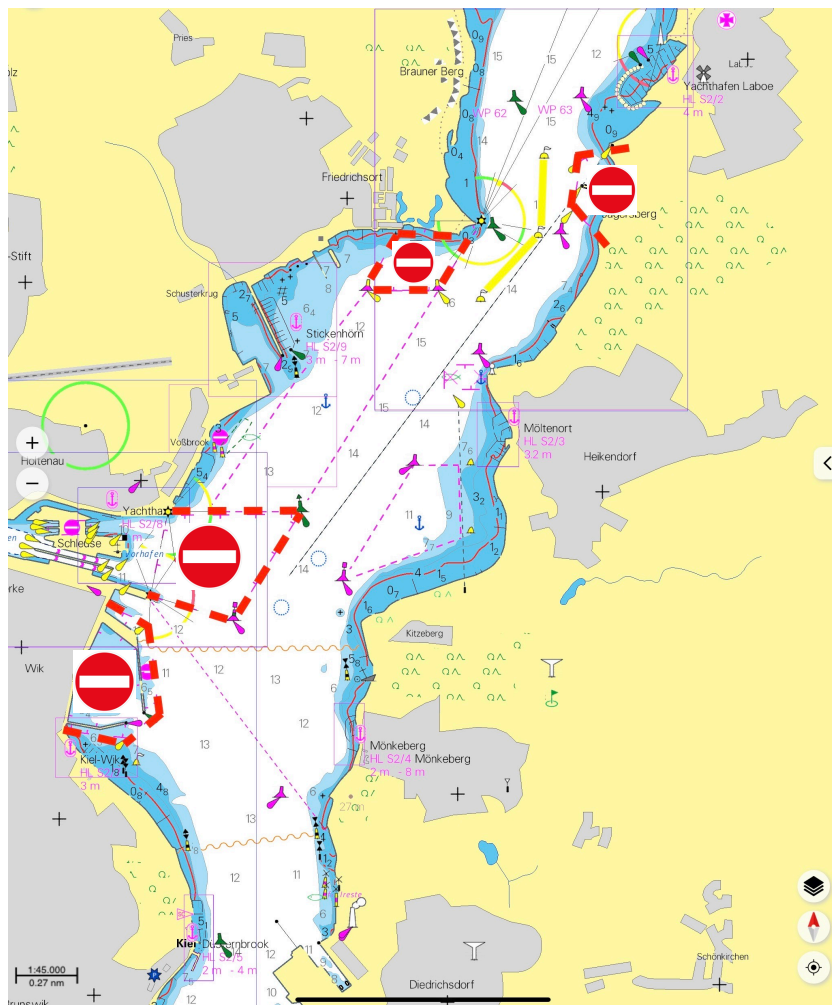


THE SECURITY CHECK WILL BE APPROX. 200 METER SOUTH OF THE STARTING LINE.

- SHOW YOUR
- + SAIL NUMBER
- + CLASS FLAG
- + GROUP FLAG (CLASS "C" ONLY)



ECKART REINKE
PRINCIPAL RACE OFFICER
WORLD CHAMPIONSHIP 2023



RESTRICTED AREAS GENERAL OBSTRUCTIONS

IT IS NOT ALLOWED TO ENTER OR CROSS ANY RESTRICTED AREAS AS SHOWN

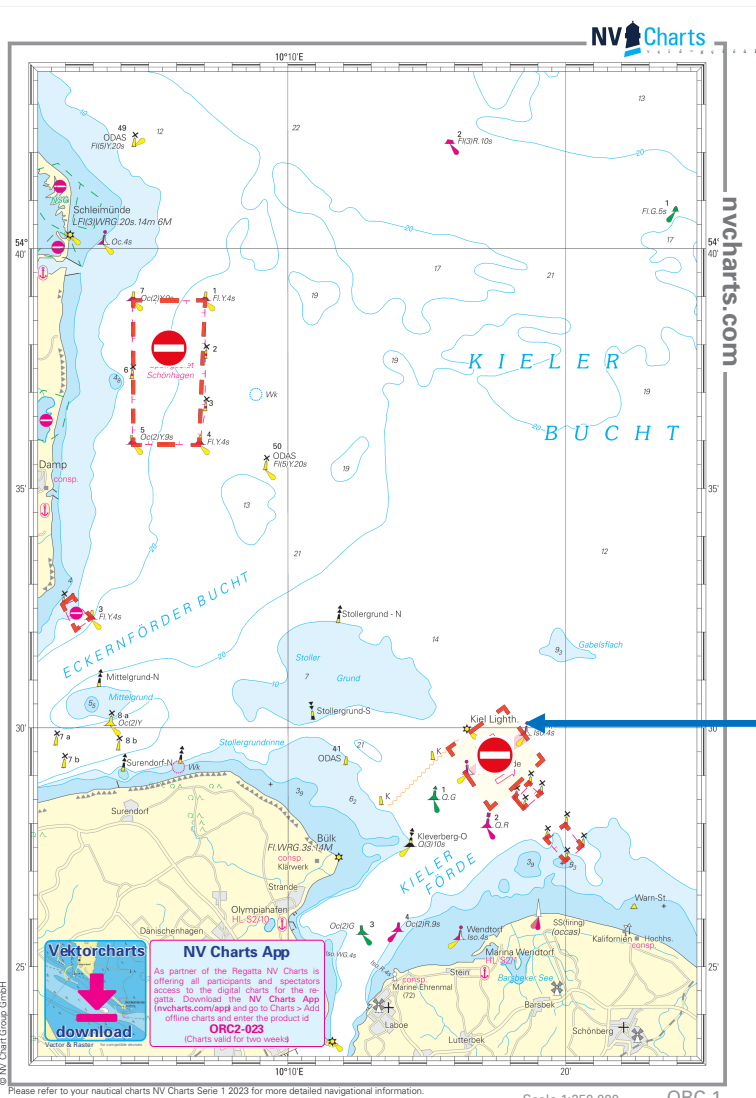
- IN THE SEA CHARTS,
- IN THE NOTICE OF RACE,
- IN THE SAILING INSTRUCTIONS,
- AND/OR OTHER AREAS MARKED WITH BUOYS.



IF FLAG "D" IS DISPLAYED AT THE STARTING HOUSE:
THE 3 **YELLOW** MARKS ARE **NOT** PLACED (THEY ARE NOT PART OF THE COURSE DIAGRAM ANYMORE).



ECKART REINKE
PRINCIPAL RACE OFFICER
WORLD CHAMPIONSHIP 2023



A BOAT

- SHALL **NOT ENTER** A TSS
- SHALL **NOT IMPEDE**, AND **NOT PRESENT A THREAT OF IMPEDING**, A VESSEL ENTERING, EXITING OR USING A TSS TRAFFIC LANE.

A TSS IS AN OBSTRUCTION.

ECKART REINKE
 PRINCIPAL RACE OFFICER
 WORLD CHAMPIONSHIP 2023



ECKART REINKE
 PRINCIPAL RACE OFFICER
 WORLD CHAMPIONSHIP 2023