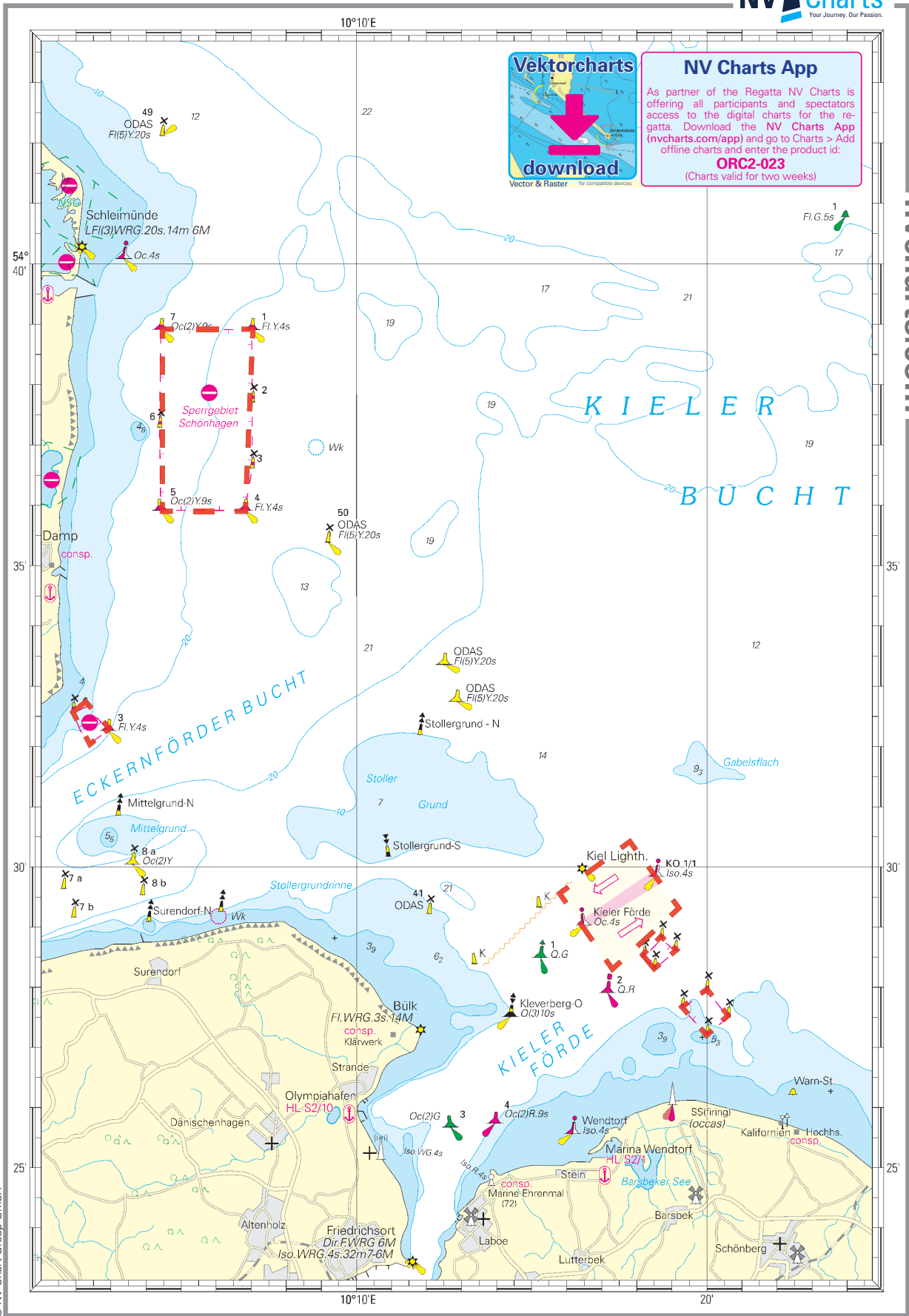


ADDENDUM RESTRICTED AREAS

	Name	Latitude	Longitude	Remarks
Restricted Areas approx. 1 nm SE to TSS Kiel	Sperrgebiet 2	54° 27.95' N	010° 20.00' E	The Restricted Aea (the direct line between the marks) shall not be crossed. It is an Obstruction.
	Sperrgebiet 2	54° 27.50' N	010° 20.60' E	
	Sperrgebiet 2	54° 27.20' N	010° 20.00' E	
	Sperrgebiet 2	54° 27.65' N	010° 19.30' E	
Restricted Areas close to TSS Kiel	Sperrgebiet 1	54° 28.8' N	010° 18.7' E	The Restricted Aea (the direct line between the marks) shall not be crossed. It is an Obstruction.
	Sperrgebiet 1	54° 28.6' N	010° 19.1' E	
	Sperrgebiet 1	54° 28.5' N	010° 18.2' E	
	Sperrgebiet 1	54° 28.3' N	010° 18.5' E	
TSS Kiel Lighthouse	TSS Kiel	54° 28.11' N	010° 17.50' E	It is not allowed to enter the TSS. It is an Obstruction.
	TSS Kiel	54° 29.61' N	010° 15.71' E	
	TSS Kiel	54° 30.47' N	010° 17.92' E	
	TSS Kiel	54° 29.17' N	010° 19.35' E	
Restricted Areas south- west of Damp	Sperrgebiet 1	54° 32.66' N	010° 02.32' E	The Restricted Aea (the direct line between the marks) shall not be crossed. It is an Obstruction.
	Sperrgebiet 2	54° 32.46' N	010° 02.62' E	
	Sperrgebiet 3	54° 32.26' N	010° 02.92' E	
	Sperrgebiet 4	54° 32.06' N	010° 02.44' E	
	Sperrgebiet 5	54° 32.27' N	010° 02.12' E	
	Sperrgebiet 6	54° 32.56' N	010° 01.91' E	
Restricted Areas close to Damp, Schönhagen, Schlei	Sperrgebiet 1	54° 38.9' N	010° 07.0' E	The Restricted Aea (the direct line between the marks) shall not be crossed. It is an Obstruction.
	Sperrgebiet 2	54° 37.7' N	010° 07.0' E	
	Sperrgebiet 3	54° 36.6' N	010° 07.0' E	
	Sperrgebiet 4	54° 35.9' N	010° 06.8' E	
	Sperrgebiet 5	54° 35.9' N	010° 04.4' E	
	Sperrgebiet 6	54° 37.3' N	010° 04.4' E	
		54° 38.9' N	010° 04.4' E	





Vektorcharts
Vector & Raster
download
for compatible devices

NV Charts App
As partner of the Regatta NV Charts is offering all participants and spectators access to the digital charts for the regatta. Download the **NV Charts App** (nvcharts.com/app) and go to Charts > Add offline charts and enter the product id: **ORC2-023**
(Charts valid for two weeks)

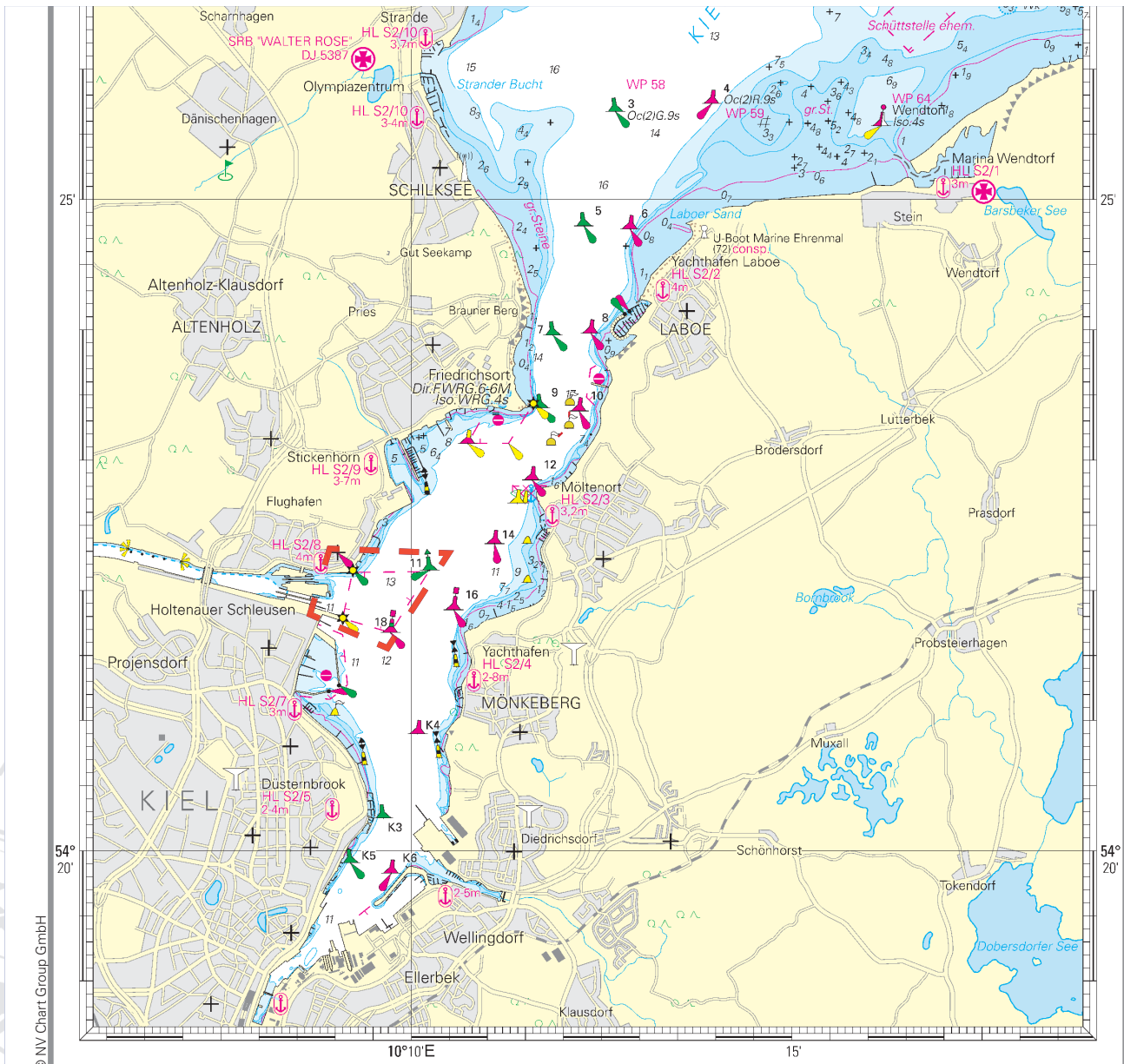
nvcharts.com

© NV Chart Group GmbH

Please refer to your nautical charts NV Charts Serie 1 2023 for more detailed navigational information.

Scale 1:250.000

Name	Latitude	Longitude	Remarks
Restricted Areas around Navy Port	54° 21.3' N	010° 09.1' E	Marked with bouys. It is an Obstruction.
Entrance Kiel Canal	54° 21.7' N	010° 09.8' E	Restricted Areas between 18/Kiel 1 and 11/Rede and the Locks. It is an Obstruction.
	54° 22.2' N	010° 10.3' E	
	54° 21.8' N	010° 09.1' E	
South of Lighthouse Friedrichsort	54° 23.1' N	010° 11.3' E	Restricted Areas marked with bouys. It is an Obstruction.
	54° 23.3' N	010° 11.5' E	
Navy Pier, East of Lighthouse Friedrichsort	54° 23.5' N	010° 12.3' E	Restricted Areas marked with bouys. It is an Obstruction.
		010° 12.4' E	



© NV Chart Group GmbH

Please refer to your nautical charts NV Charts Serie 1 2023 for more detailed navigational information.

Scale 1:80.000

Name	Latitude	Longitude	Remarks
Wreck	54° 42.9' N	010° 44.2' E	Radius of 0.5 nautical miles. It is an Obstruction.
Mine	54° 41.7' N	010° 42.6' E	Radius of 320 meter. It is an Obstruction.
Mine	54° 38.2' N	010° 44.8' E	Radius of 320 meter. It is an Obstruction.

