

# ADDENDUM COURSES

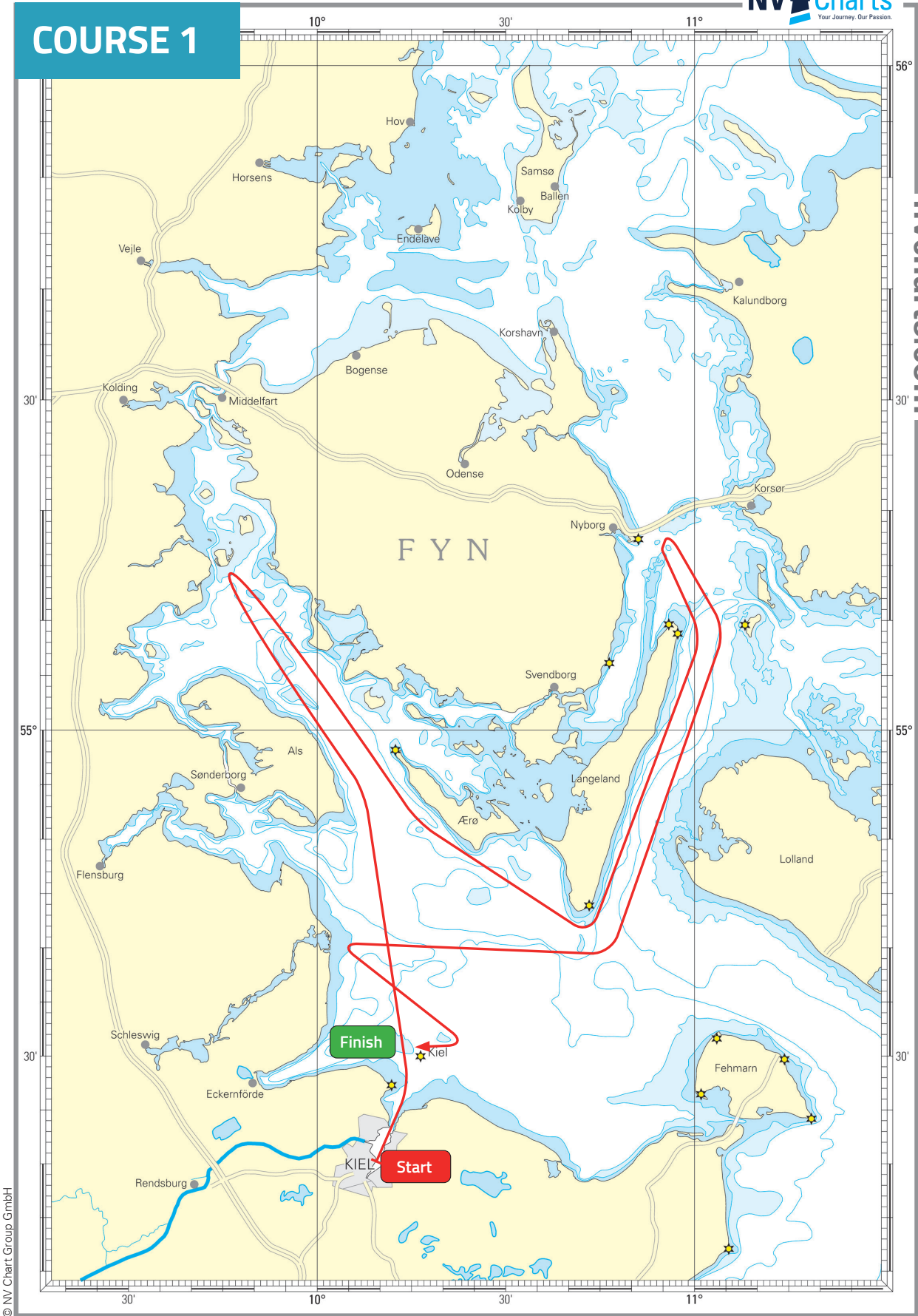
wording	meaning
pass	passing between the marks
round	leave to port or to starboard – your tactical decision
port	leave the mark on your port side
starboard	leave the mark on your starboard side

Course 1						
mark	nm	definition	side	approx. lat	approx. long	
Start in front of KYC		starting line				
Three yellow marks*		see 10.4	port	54° 23.2' N	010° 12.0' E	
	58					
Årø, Tn (gn) Fkl. 3		rounding mark	starboard	55° 15.0' N	009° 47.6' E	
	46					
Island Langeland		passing	port			
	36					
N-cardinal mark		rounding mark	starboard	55° 16.8' N	010° 55.7' E	
	40					
Gate: Tn (y) (Fl 20s) and Tn (r) 14 (Fl 15s)		gate	passing	54° 39.1' N	010° 41.4' E	from East to West, with yellow mark on starboard
	22					
Schleimünde Approach r/w		rounding mark	port	54° 40.1' N	010° 03.4' E	
	13					
Bubble Gabelsfach		rounding mark	starboard	54°31,6'N	010°20,4'E	
	3					
LT Kiel Finish and bubble		finishing line	passing	54°30,0'N	010°16,4'E	
TOTAL	218					

\*Three yellow marks will be positioned approx. 0.3 nm SSE and E of Lighthouse Friedrichsort (approx. 54° 23' N, 010° 12' E). The connection line of these buoys shall be passed eastward, i.e. they shall be left to port and are not to be crossed. The connection line is an obstruction acc. to RRS 18, 19.

At the starting house will be displayed flag „D“, if the three yellow marks are not laid out.

**COURSE 1**



nvcharts.com

© NV Chart Group GmbH

Please refer to your nautical charts NV Charts Serie 1 2023 for more detailed navigational information.

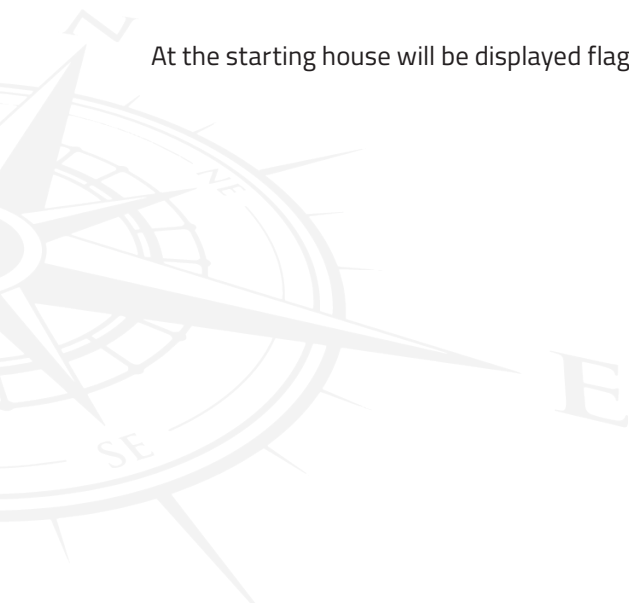
Scale 1:800.000

ORC 2

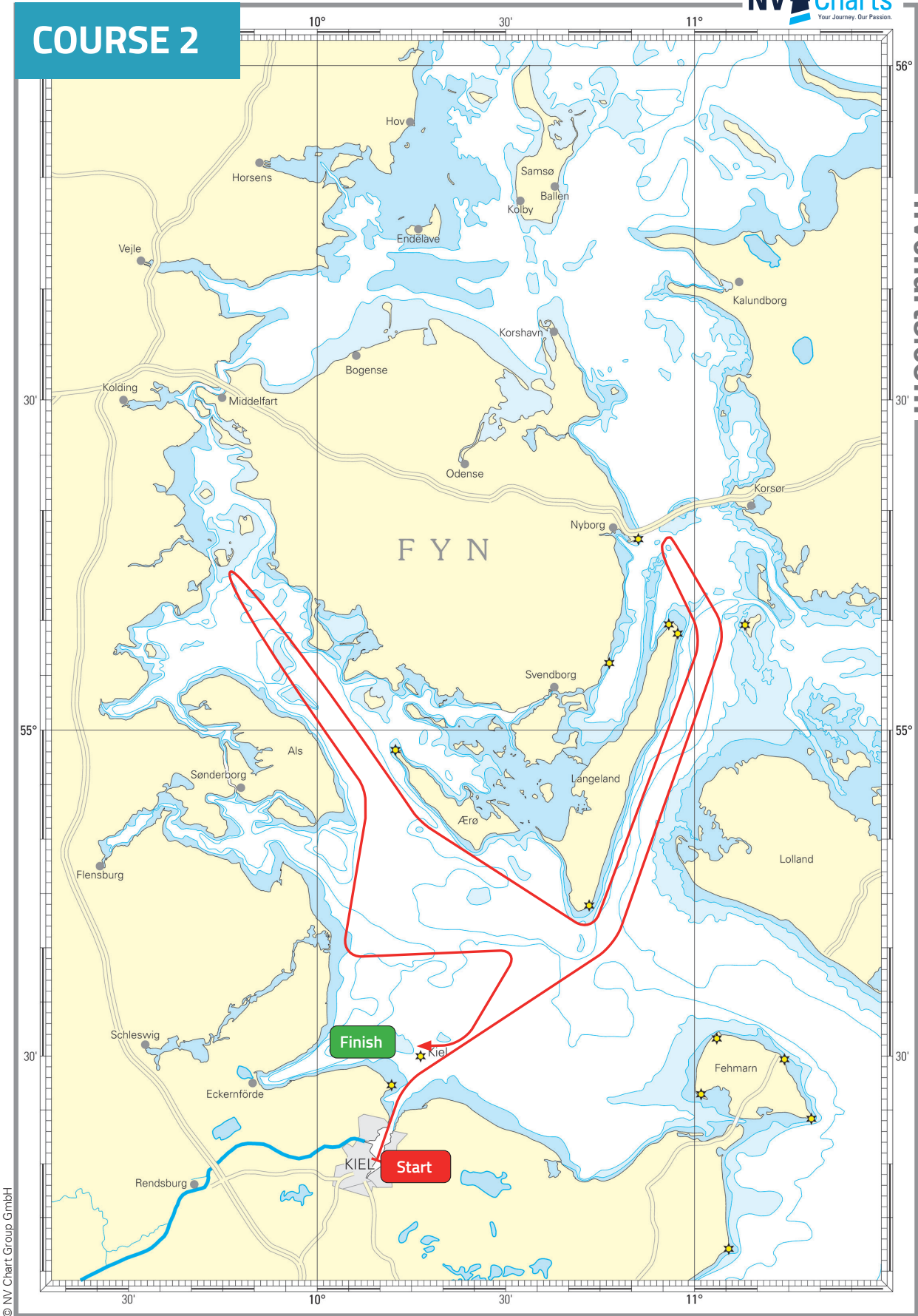
Course 2					
mark	nm	definition	side	approx. lat	approx. long
Start in front of KYC		starting line			
Three yellow marks*		see Sl	port	54° 23.2' N	010° 12.0' E
	32				
Island Langeland		passing	port		
	36				
N-cardinal mark		rounding mark	port	55° 16.8' N	010° 55.7' E
	36				
Island Langeland		passing	starboard		
	46				
Årø, Tn (gn) Fkl. 3		rounding mark	port	55° 15.0' N	009° 47.6' E
	38				
Schleimünde Approach r/w		rounding mark	port	54° 40.1' N	010° 03.4' E
	12				
Tn (gn) 1 (WP 8)		rounding mark	starboard	54° 40.8' N	010° 23.9' E
	9				
Bubble Gabelsflach		rounding mark	starboard	54° 31,6' N	010° 20,4' E
	3				
LT Kiel Finish and bubble		finishing line	passing	54° 30,0' N	010° 16,4' E
TOTAL	212				

\*Three yellow marks will be positioned approx. 0.3 nm SSE and E of Lighthouse Friedrichsort (approx. 54° 23' N, 010° 12' E). The connection line of these buoys shall be passed eastward, i.e. they shall be left to port and are not to be crossed. The connection line is an obstruction acc. to RRS 18, 19.

At the starting house will be displayed flag „D“, if the three yellow marks are not laid out.



**COURSE 2**



nvcharts.com

© NV Chart Group GmbH

Please refer to your nautical charts NV Charts Serie 1 2023 for more detailed navigational information.

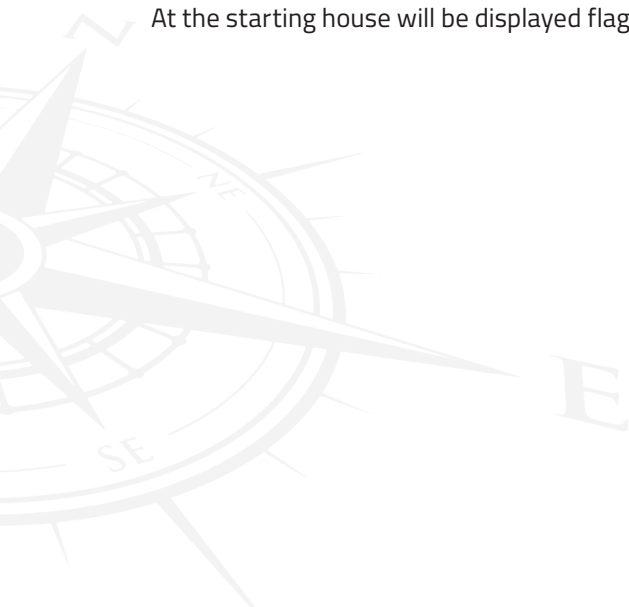
Scale 1:800.000

ORC 2

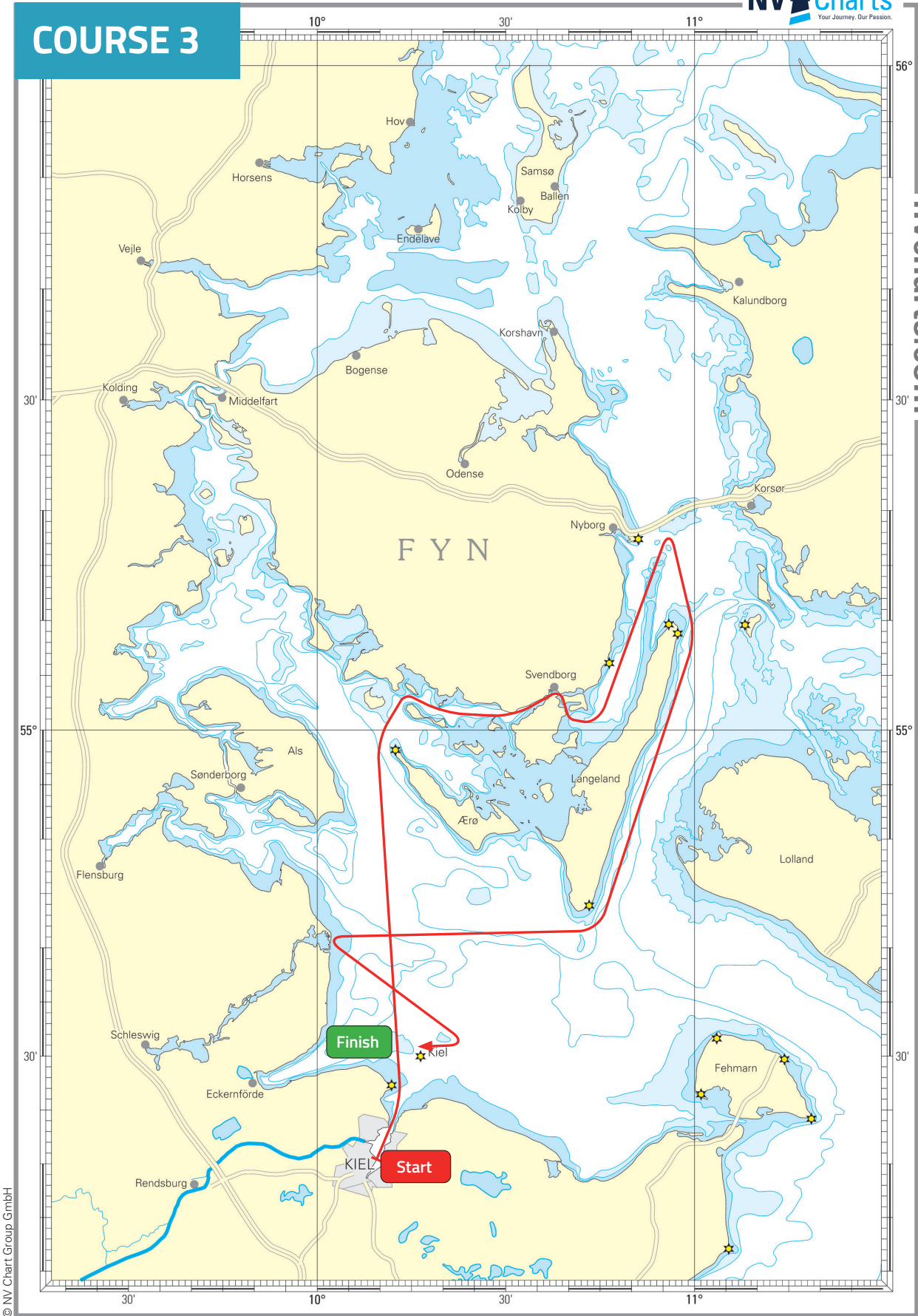
Course 3						
mark	nm	definition	side	approx. lat	approx. long	
Start in front of KYC		starting line				
Three yellow marks*		see SI	port	54° 23.2' N	010° 12.0' E	
	55					
mark red (WP 124)		rounding mark	starboard	55° 02.7' N	010° 14.2' E	
	17					
S-cardinal mark (WP 277)		rounding mark	port	55° 01.2' N	010° 44.1' E	
	17					
N-cardinal mark		rounding mark	starboard	55° 16.8' N	010° 55.7' E	
	40					
Gate: Tn (y) (FI 20s) and Tn (r) 14 (FI 15s)		gate	passing	54° 39.1' N	010° 41.4' E	from East to West, with yellow mark on starboard
	22					
Schleimünde Approach r/w		rounding mark	port	54° 40.1' N	010° 03.4' E	
	13					
Bubble Gabelsflach		rounding mark	starboard	54° 31,6' N	010° 20,4' E	
	3					
LT Kiel Finish and bubble		finishing line	passing	54° 30,0' N	010° 16,4' E	
TOTAL	167					

\*Three yellow marks will be positioned approx. 0.3 nm SSE and E of Lighthouse Friedrichsort (approx. 54° 23' N, 010° 12' E). The connection line of these buoys shall be passed eastward, i.e. they shall be left to port and are not to be crossed. The connection line is an obstruction acc. to RRS 18, 19.

At the starting house will be displayed flag „D“, if the three yellow marks are not laid out.



**COURSE 3**



nvcharts.com

© NV Chart Group GmbH

Please refer to your nautical charts NV Charts Serie 1 2023 for more detailed navigational information.

Scale 1:800.000

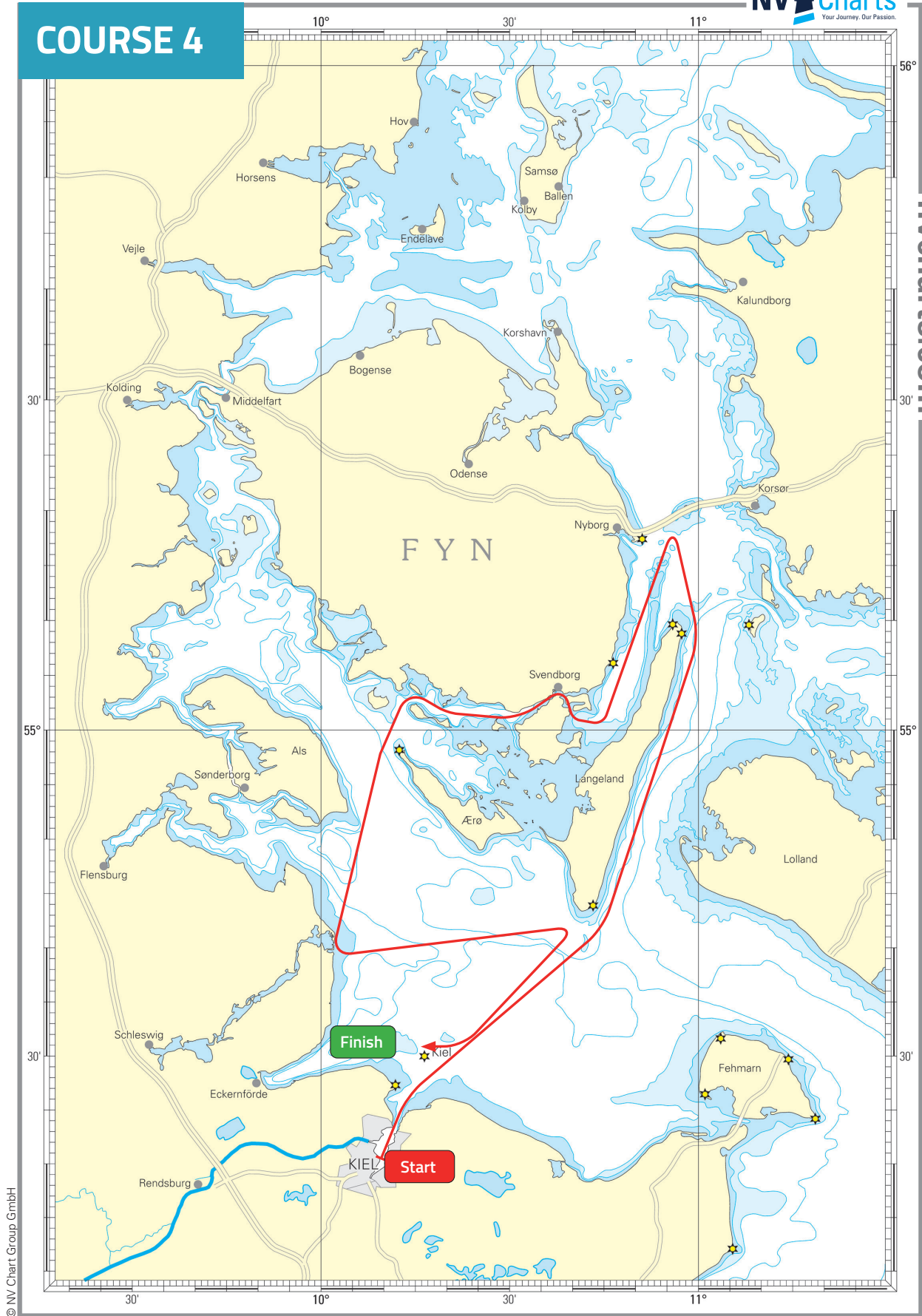
ORC 2

<b>Course 4</b>					
mark	nm	definition	side	approx. lat	approx. long
Start in front of KYC		starting line			
Three yellow marks*		see SI	port	54° 23.2' N	010° 12.0' E
	32				
Island Langeland		passing	port		
	36				
N-cardinal mark		rounding mark	port	55° 16.8' N	010° 55.7' E
	17				
S-cardinal mark (WP 277)		rounding mark	starboard	55° 01.2' N	010° 44.1' E
	17				
mark red (WP 124)		rounding mark	port	55° 02.7' N	010° 14.2' E
	19				
Schleimünde Approach r/w		rounding mark	port	54° 40.1' N	010° 03.4' E
	21				
Tn (gn) 7		rounding mark	starboard	54° 39.0' N	010° 39.3' E
	13				
Bubble Gabelsflach		rounding mark	starboard	54°31,6'N	010°20,4'E
	3				
LT Kiel Finish and bubble		finishing line	passing	54°30,0'N	010°16,4'E
TOTAL	158				

\*Three yellow marks will be positioned approx. 0.3 nm SSE and E of Lighthouse Friedrichsort (approx. 54° 23' N, 010°12' E). The connection line of these buoys shall be passed eastward, i.e. they shall be left to port and are not to be crossed. The connection line is an obstruction acc. to RRS 18, 19.

At the starting house will be displayed flag „D“, if the three yellow marks are not laid out.

**COURSE 4**



nvcharts.com

© NV Chart Group GmbH

Please refer to your nautical charts NV Charts Serie 1 2023 for more detailed navigational information.

Scale 1:800.000

ORC 2



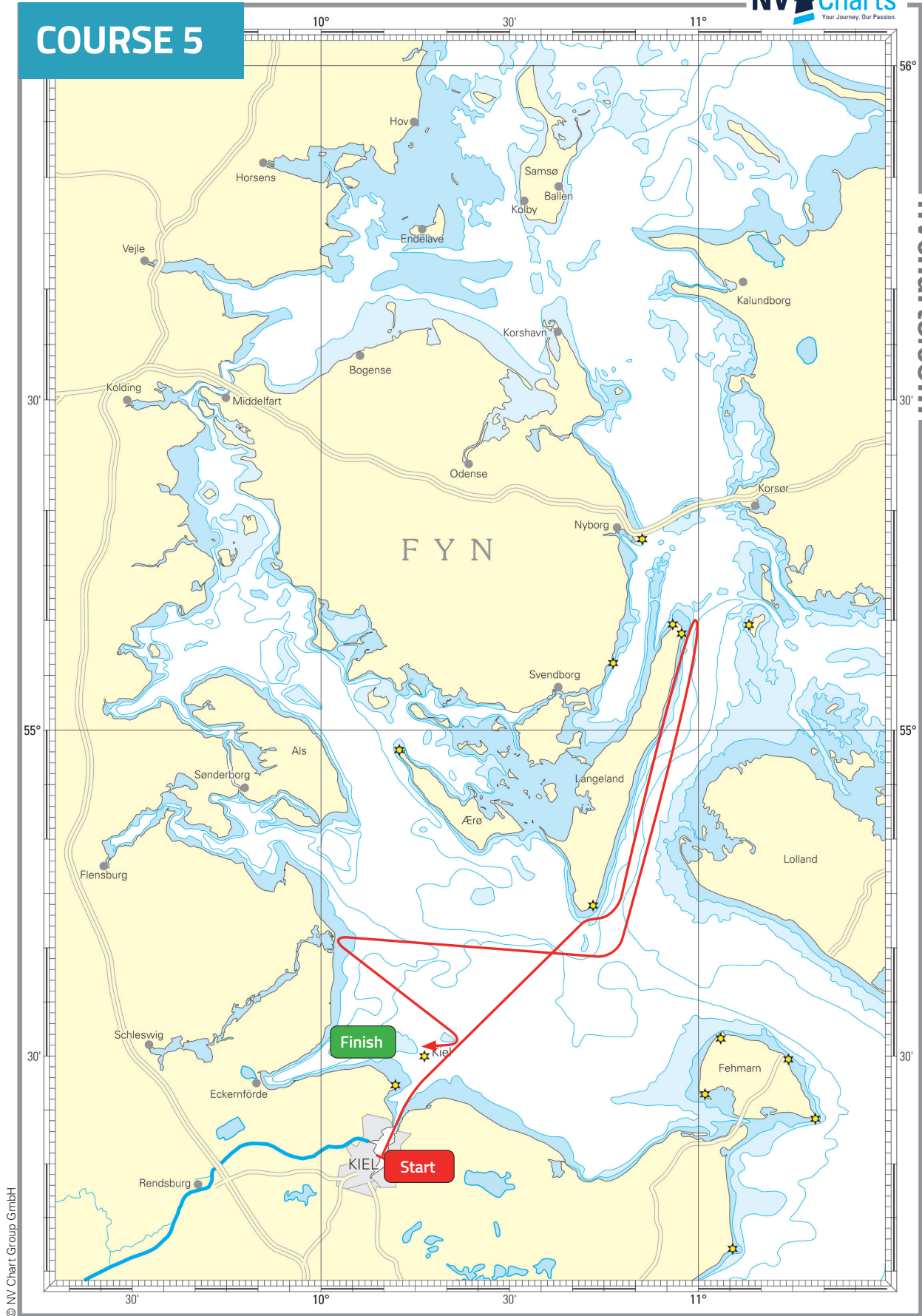
Course 5						
mark	nm	definition	side	approx. lat	approx. long	
Start in front of KYC		starting line				
Three yellow marks*		see SI	port	54° 23.2' N	010° 12.0' E	
	58					
DW 41 (WP 255)		rounding mark	port	55° 08.9' N	010° 59.1' E	
	32					
Gate: Tn (y) (FI 20s) and Tn (r) 14 (FI 15s)		gate	passing	54° 39.1' N	010° 41.4' E	
	22					
Schleimünde Approach r/w		rounding mark	port	54° 40.1' N	010° 03.4' E	
	13					
Bubble Gabelsflach		rounding mark	starboard	54° 31,6' N	010° 20,4' E	from East to West, with yellow mark on starboard
	3					
LT Kiel Finish and bubble		finishing line	passing	54° 30,0' N	010° 16,4' E	
TOTAL	128					

\*Three yellow marks will be positioned approx. 0.3 nm SSE and E of Lighthouse Friedrichsort (approx. 54° 23' N, 010° 12' E ). The connection line of these buoys shall be passed eastward, i.e. they shall be left to port and are not to be crossed. The connection line is an obstruction acc. to RRS 18, 19.

At the starting house will be displayed flag „D“, if the three yellow marks are not laid out.



**COURSE 5**



nvcharts.com

© NV Chart Group GmbH

Please refer to your nautical charts NV Charts Serie 1 2023 for more detailed navigational information.

Scale 1:800.000

ORC 2

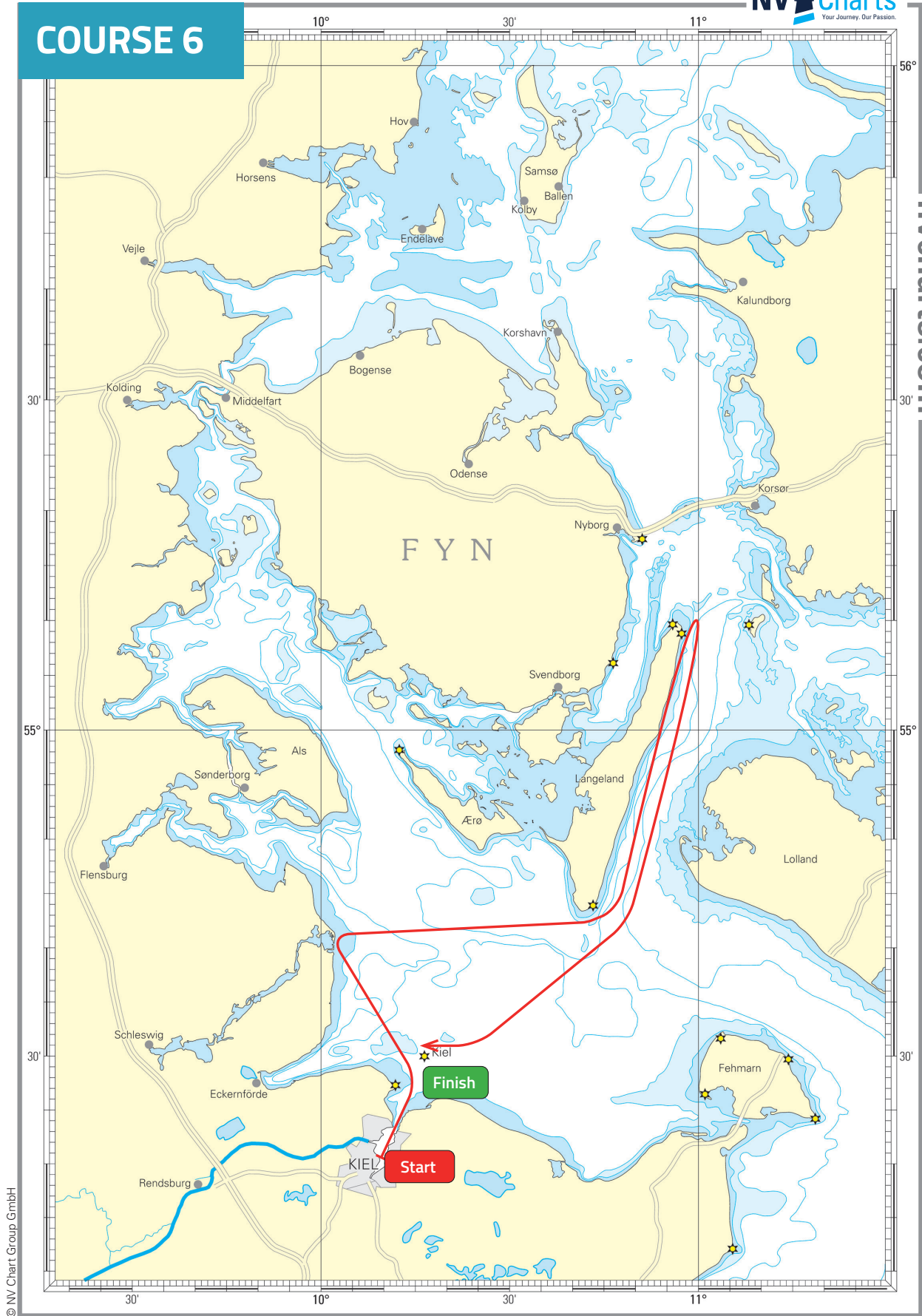
Course 6						
mark	nm	definition	side	approx. lat	approx. long	
Start in front of KYC		starting line				
Three yellow marks*		see SI	port	54° 23.2' N	010° 12.0' E	
	22					
Schleimünde Approach r/w		rounding mark	starboard	54° 40.1' N	010° 03.4' E	
	23					
Island Langeland		pass	port			
	28					
DW 41 (WP 255)		rounding mark	starboard	55° 08.9' N	010° 59.1' E	
	32					
Gate: Tn (y) (FI 20s) and Tn (r) 14 (FI 15s)		gate	passing	54° 39.1' N	010° 41.4' E	from East to West, with yellow mark on starboard
	14					
Bubble Gabelsflach		rounding mark	starboard	54°31,6'N	010°20,4'E	
	3					
LT Kiel Finish and bubble		finishing line	passing	54°30,0'N	010°16,4'E	
TOTAL	122					

\*Three yellow marks will be positioned approx. 0.3 nm SSE and E of Lighthouse Friedrichsort (approx. 54° 23' N, 010° 12' E). The connection line of these buoys shall be passed eastward, i.e. they shall be left to port and are not to be crossed. The connection line is an obstruction acc. to RRS 18, 19.

At the starting house will be displayed flag „D“, if the three yellow marks are not laid out.



**COURSE 6**



nvcharts.com

© NV Chart Group GmbH

Please refer to your nautical charts NV Charts Serie 1 2023 for more detailed navigational information.

Scale 1:800.000

ORC 2

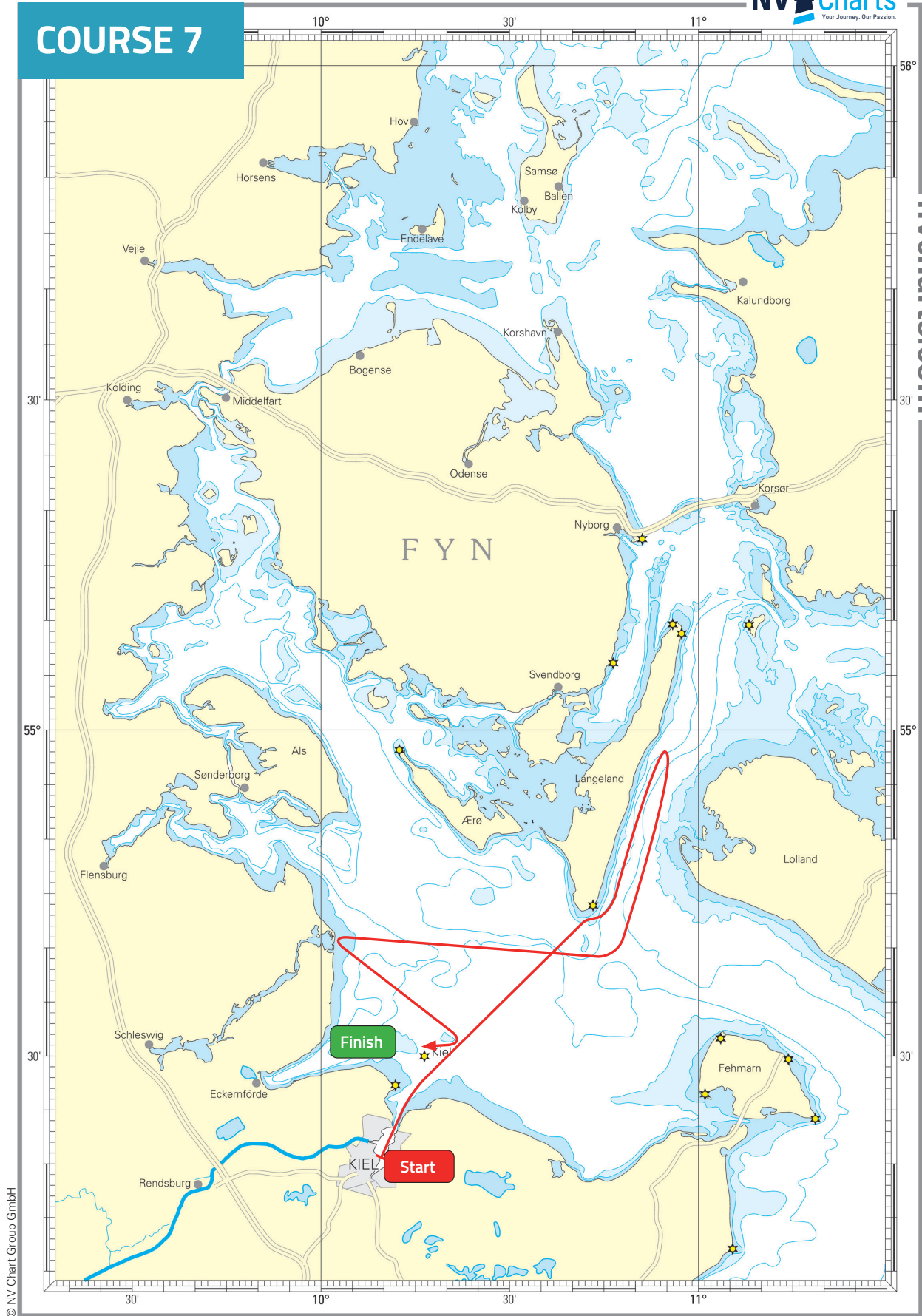
Course 7					
mark	nm	definition	side	approx. lat	approx. long
Start in front of KYC		starting line			
Three yellow marks*		see SI	port	54° 23.2' N	010° 12.0' E
	43				
Spodsbjerg		rounding mark	starboard	54° 55.2' N	010° 50.6' E
	36				
Schleimünde Approach r/w		rounding mark	port	54° 40.1' N	010° 03.4' E
	13				
Bubble Gabelsfach		rounding mark	starboard	54°31,6'N	010°20,4'E
	3				
LT Kiel Finish and bubble		finishing line	passing	54°30,0'N	010°16,4'E
TOTAL	95				

\*Three yellow marks will be positioned approx. 0.3 nm SSE and E of Lighthouse Friedrichsort (approx. 54° 23' N, 010°12' E). The connection line of these buoys shall be passed eastward, i.e. they shall be left to port and are not to be crossed. The connection line is an obstruction acc. to RRS 18, 19.

At the starting house will be displayed flag „D“, if the three yellow marks are not laid out.



**COURSE 7**



nvcharts.com

© NV Chart Group GmbH

Please refer to your nautical charts NV Charts Serie 1 2023 for more detailed navigational information.

Scale 1:800.000

ORC 2

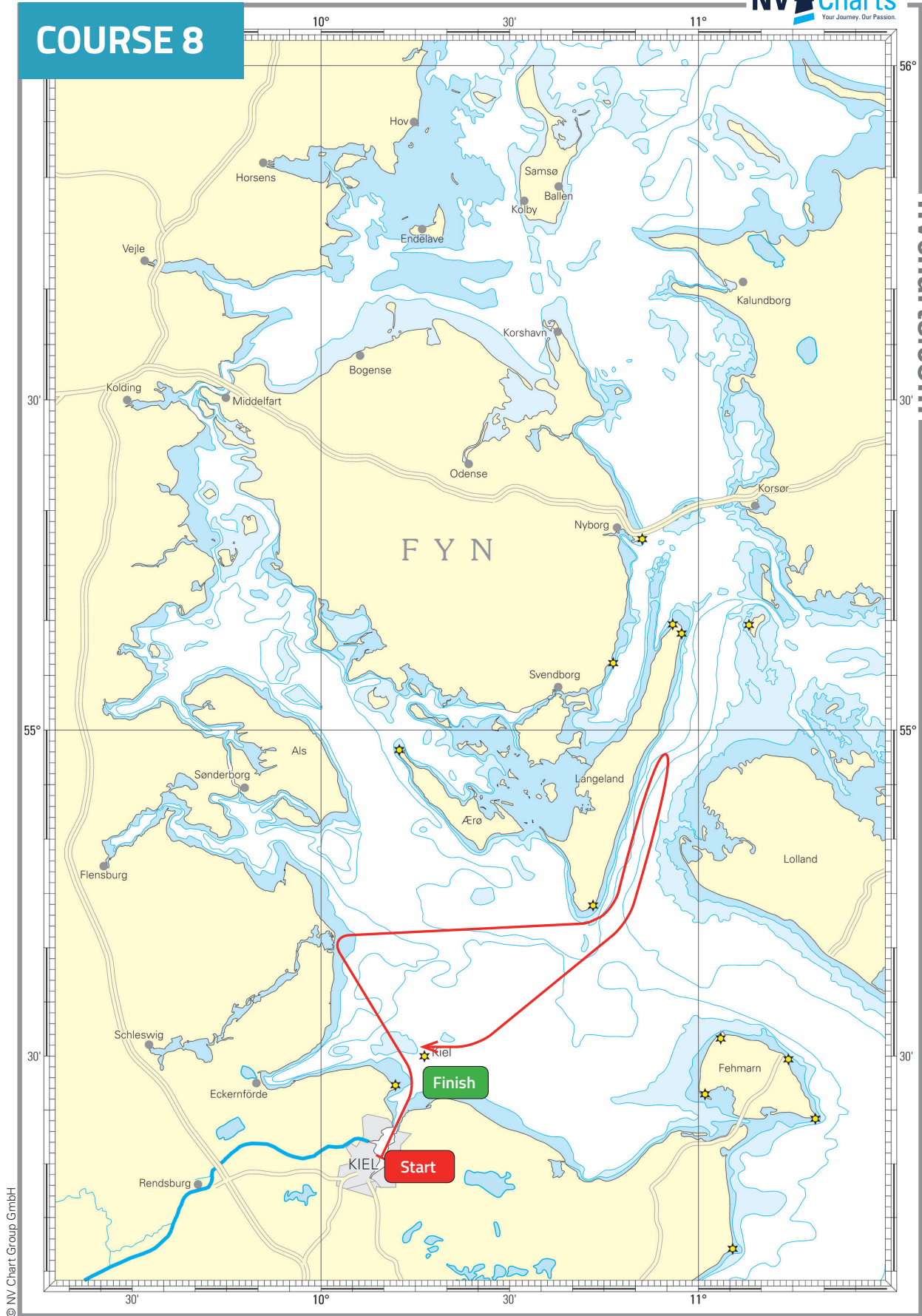
Course 8						
mark	nm	definition	side	approx. lat	approx. long	
Start in front of KYC		starting line				
Three yellow marks*		see SI	port	54° 23.2' N	010° 12.0' E	
	22					
Schleimünde Approach r/w		rounding mark	starboard	54° 40.1' N	010° 03.4' E	
	23					
Island Langeland		pass	port			
	13					
Spodsbjerg		rounding mark	starboard	54° 55.2' N	010° 50.6' E	
	17					
Gate: Tn (y) (FI 20s) and Tn (r) 14 (FI 15s)		gate	passing	54° 39.1' N	010° 41.4' E	from East to West, with yellow mark on starboard
	14					
Bubble Gabelsfloch		rounding mark	starboard	54° 31,6' N	010° 20,4' E	
	3					
LT Kiel Finish and bubble		finishing line	passing	54° 30,0' N	010° 16,4' E	
TOTAL	92					

\*Three yellow marks will be positioned approx. 0.3 nm SSE and E of Lighthouse Friedrichsort (approx. 54° 23' N, 010° 12' E). The connection line of these buoys shall be passed eastward, i.e. they shall be left to port and are not to be crossed. The connection line is an obstruction acc. to RRS 18, 19.

At the starting house will be displayed flag „D“, if the three yellow marks are not laid out.



**COURSE 8**



nvcharts.com

© NV Chart Group GmbH

Please refer to your nautical charts NV Charts Serie 1 2023 for more detailed navigational information.

Scale 1:800.000

ORC 2