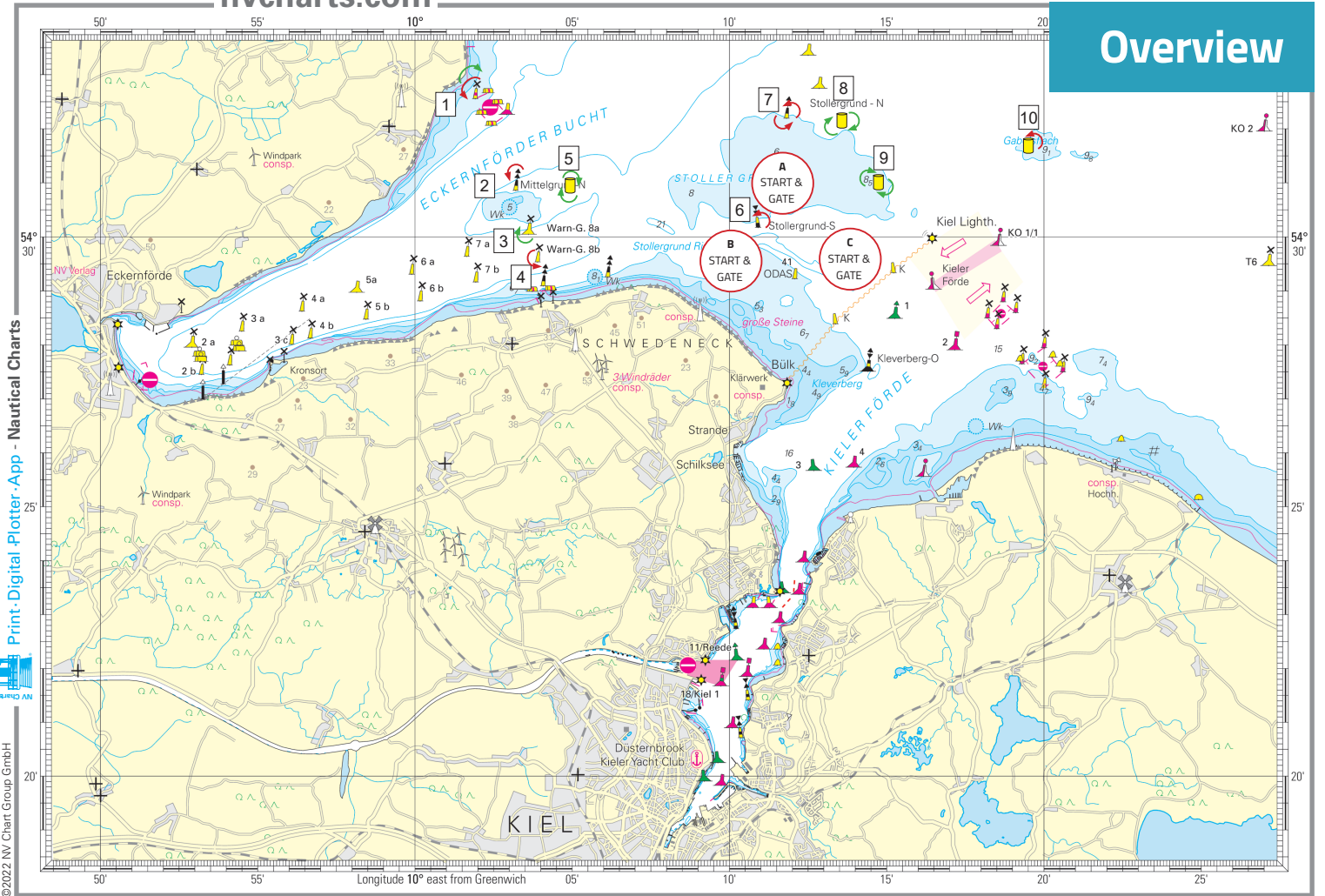


Addendum Courses for Coastal Races

nvcharts.com

Overview



Print-Digital-Plotter-App - Nautical Charts
© 2022 NV Chart Group GmbH

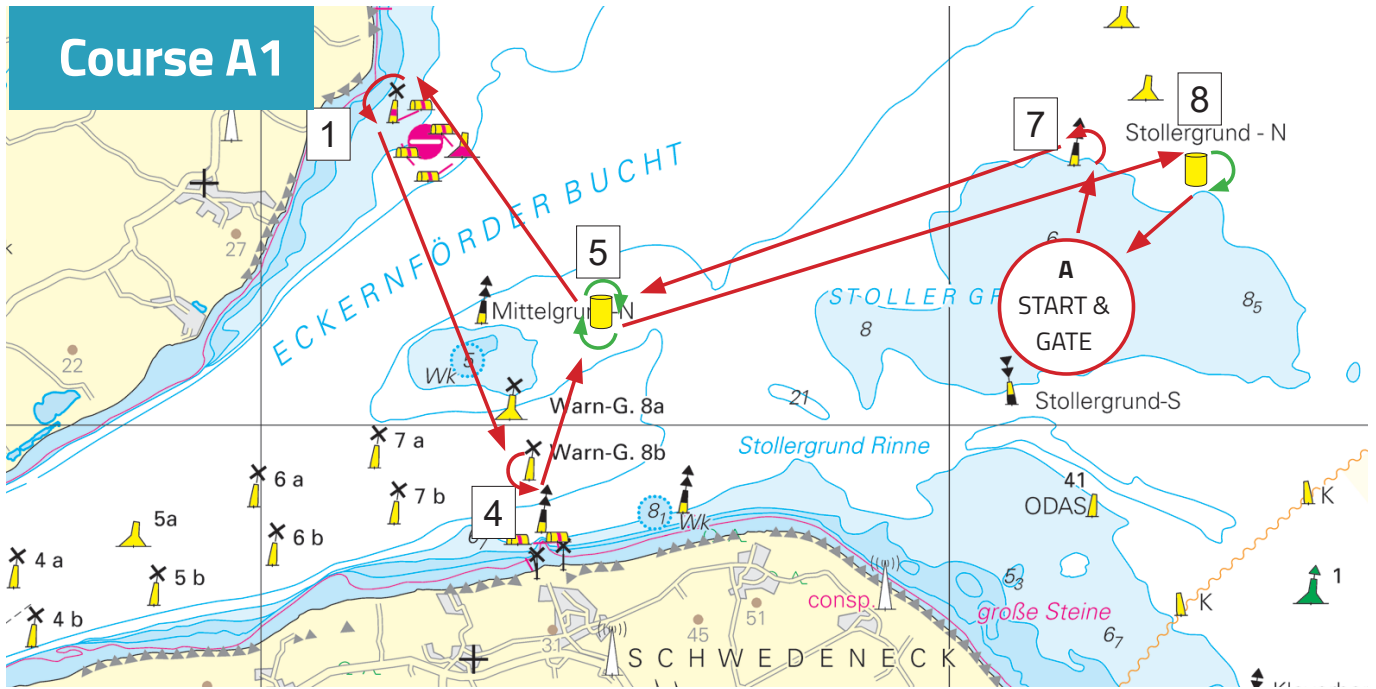
Please refer to your nautical charts NV Charts Serie 1 2022 for more detailed navigational information.

Scale 1:160.000 Kiwo 2



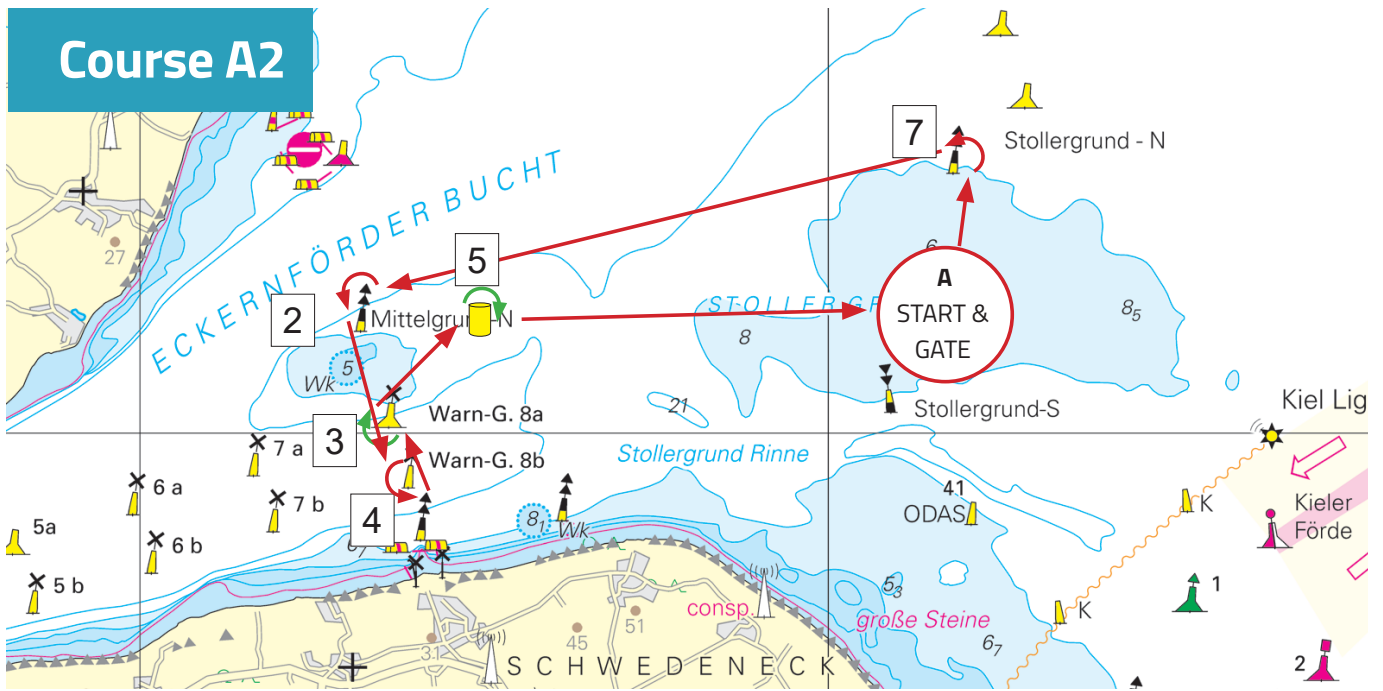
Overview					
Mark	Name	Latitude	Longitude	Side	Remarks
GATE 1	GATE 1	1.0 to 1.4 nm windward to Start		pass	1 Starboard and 1a Port
GATE 2	GATE 2	Same position as Gate 1			1 Port and 1a Starboard
1	Sperrgebiet 1	54° 32.66' N	010° 02.32' E	port	The Restricted Aea (the direct line between the marks) shall not be crossed. It is an Obstruction.
	Sperrgebiet 2	54° 32.46' N	010° 02.62' E		
	Sperrgebiet 3	54° 32.26' N	010° 02.92' E		
	Sperrgebiet 4	54° 32.06' N	010° 02.44' E		
	Sperrgebiet 5	54° 32.27' N	010° 02.12' E		
	Sperrgebiet 6	54° 32.56' N	010° 01.91' E		
2	Mittelgrund-North	54° 30.9' N	010° 03.2' E	port	
3	Warn-Gebiet 8A	54° 30.0' N	010° 03.6' E	starboard	
4	Warn-Gebiet 8B	54° 29.5' N	010° 03.9' E	port	
5	yellow or orange bubble (Mittelgrund)	54° 30.8' N	010° 03.6' E	starboard	
6	Stollergrund-South	54° 30.3' N	010° 10.9' E	port	
7	Stollergrund-North	54° 32.2' N	010° 11.8' E	port	
8	yellow or orange bubble (S-Nord)	54° 32.3' N	010° 12.2' E	starboard	
9	yellow or orange bubble (S-Ost)	54° 31.0' N	010° 15.4' E	starboard	
10	yellow or orange bubble (Gabelsflach)	54° 31.5' N	010° 20.0' E	port	





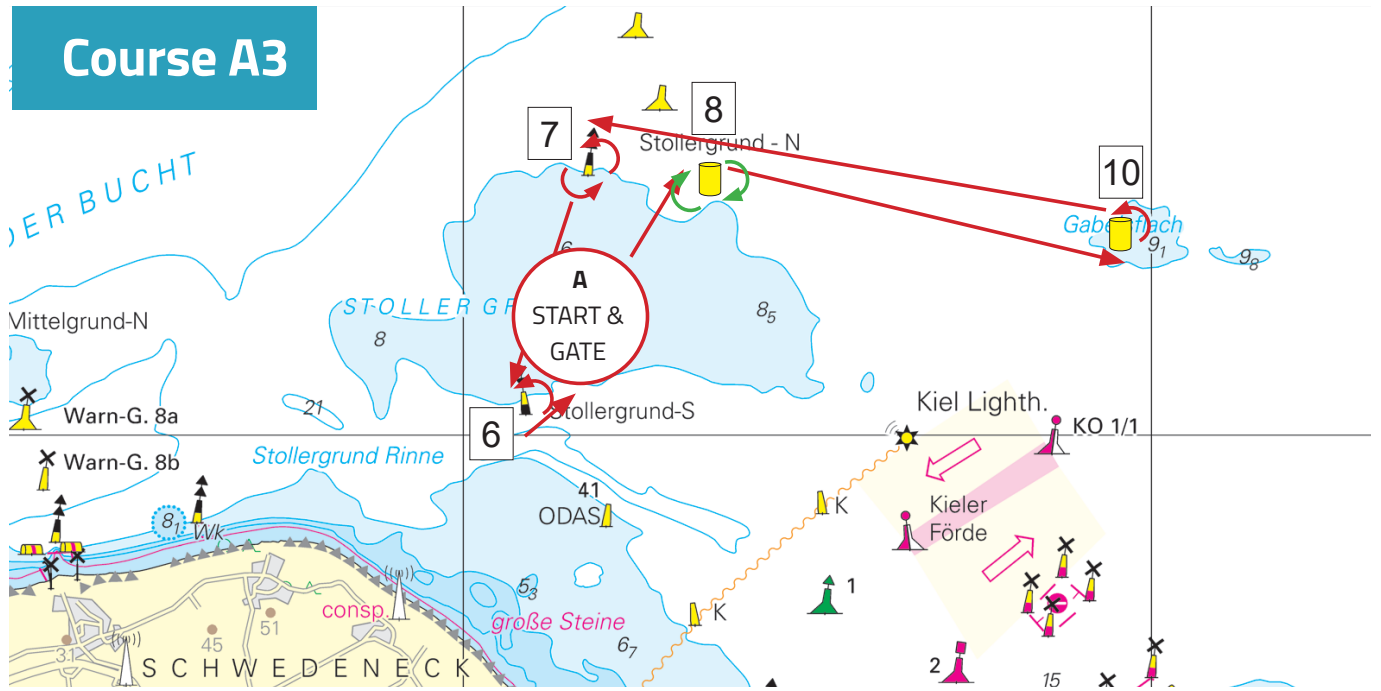
Mark	Side	approx. nm
START		
		1,2
Gate 1	pass	
		1,0
7	port	
		5,0
5	starboard	
		2,0
1	port	
		3,7
4	port	
		1,3
5	starboard	
		5,2
8	starboard	
		1,0
Gate 2	pass	
		1,2
FINISH		
Estimate	nautical miles	21,6



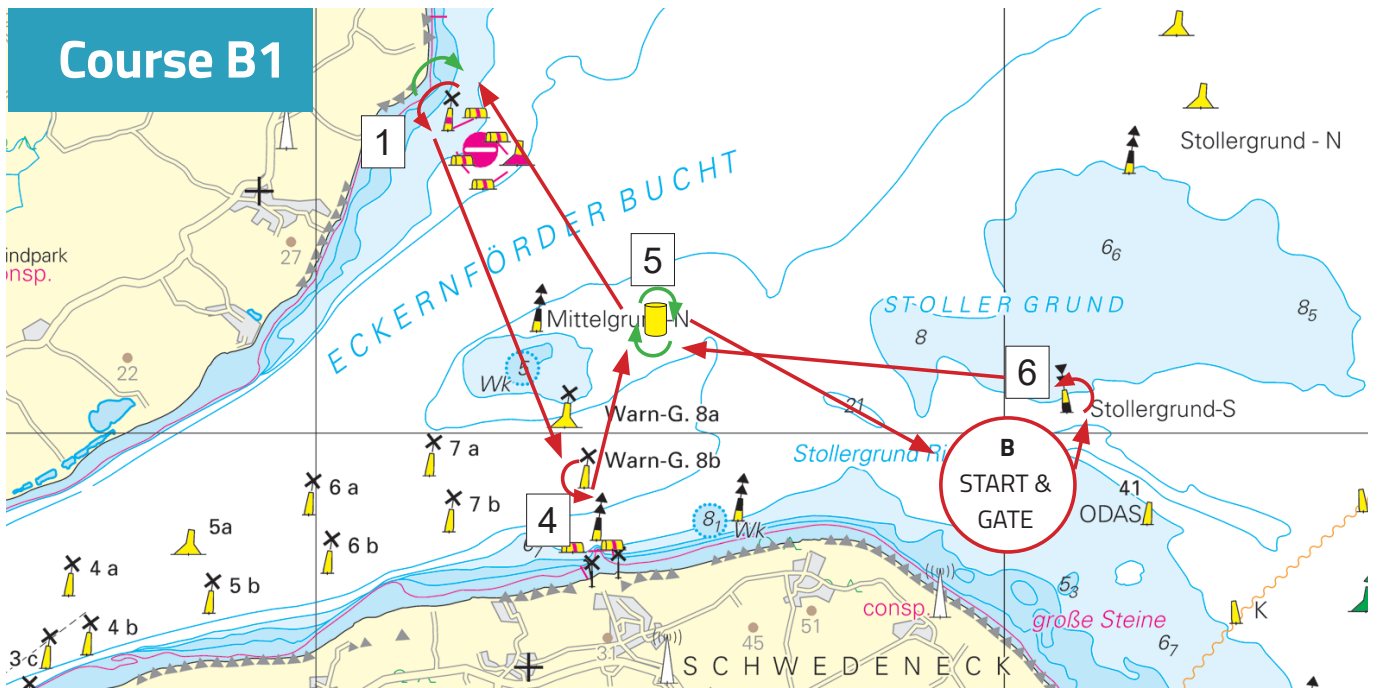


Mark	Side	approx. nm
START		
		1,2
Gate 1	pass	
		1,0
7	port	
		5,2
2	port	
		1,4
4	port	
		0,5
3	starboard	
		0,8
5	starboard	
		5,2
Gate 2	pass	
		1,2
FINISH		
Estimate	nautical miles	16,5

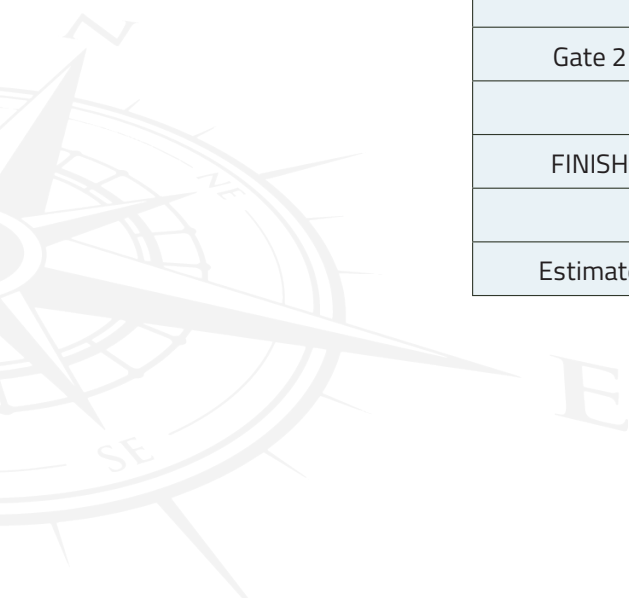
Course A3

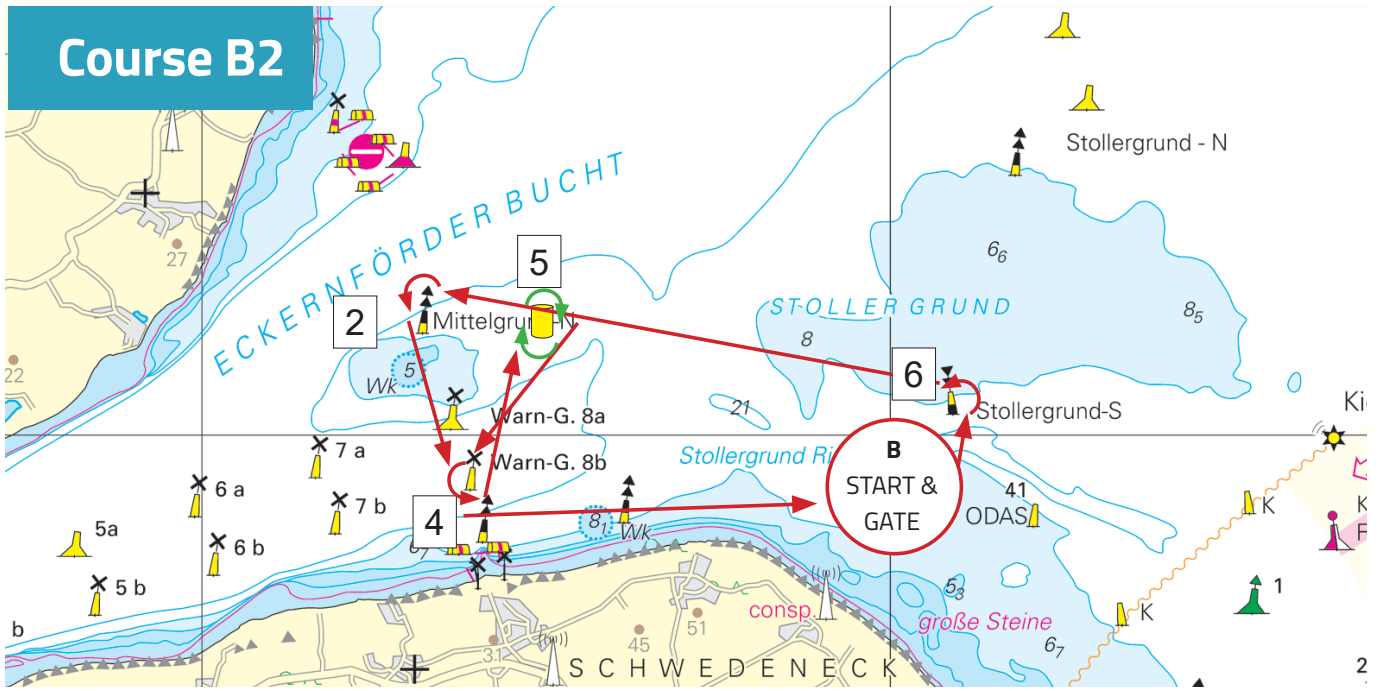


Mark	Side	approx. nm
START		
		1,2
Gate 1	pass	
		1,0
8	starboard	
		4,5
10	port	
		4,7
7	port	
		2,1
6	port	
		1,0
Gate 2	pass	
		1,2
FINISH		
Estimate	nautical miles	15,7

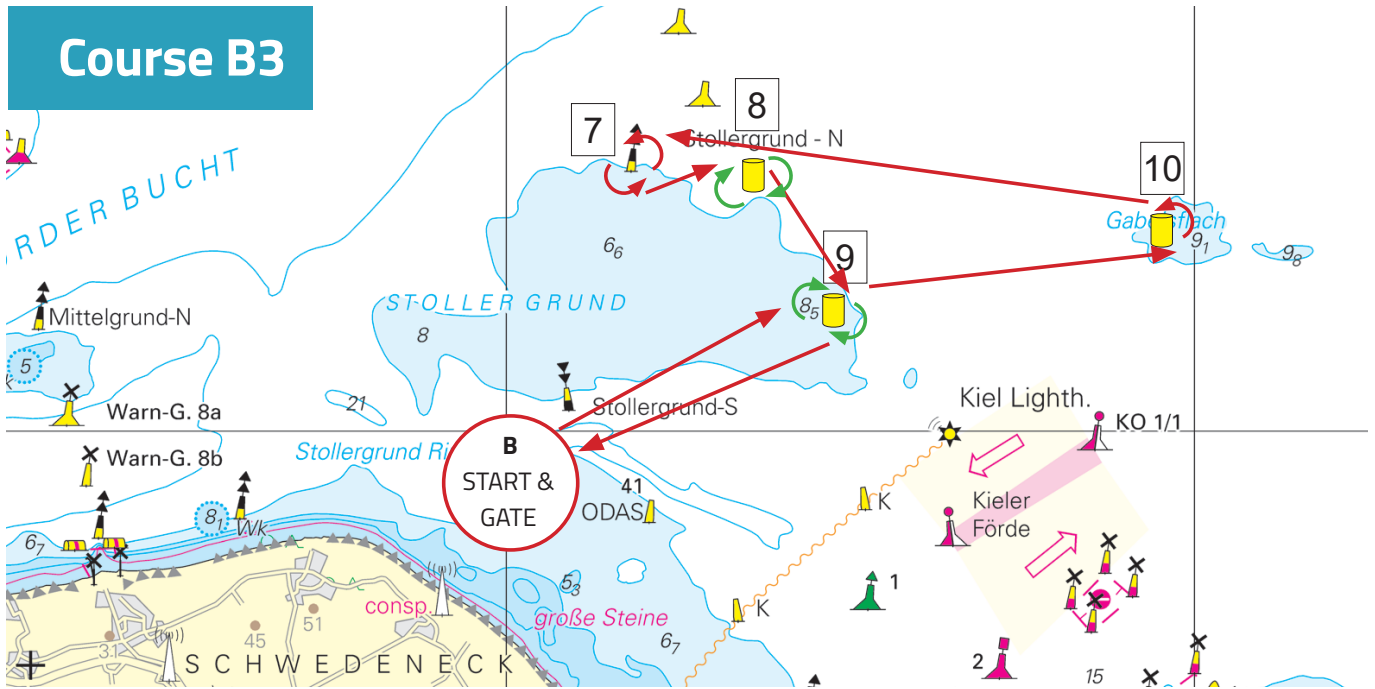


Mark	Side	approx. nm
		1,2
Gate 1	pass	
		0,5
6	port	
		4,2
5	starboard	
		2,0
1	port	
		3,7
4	port	
		1,3
5	starboard	
		4,7
Gate 2	pass	
		1,2
FINISH		
Estimate	nautical miles	18,8

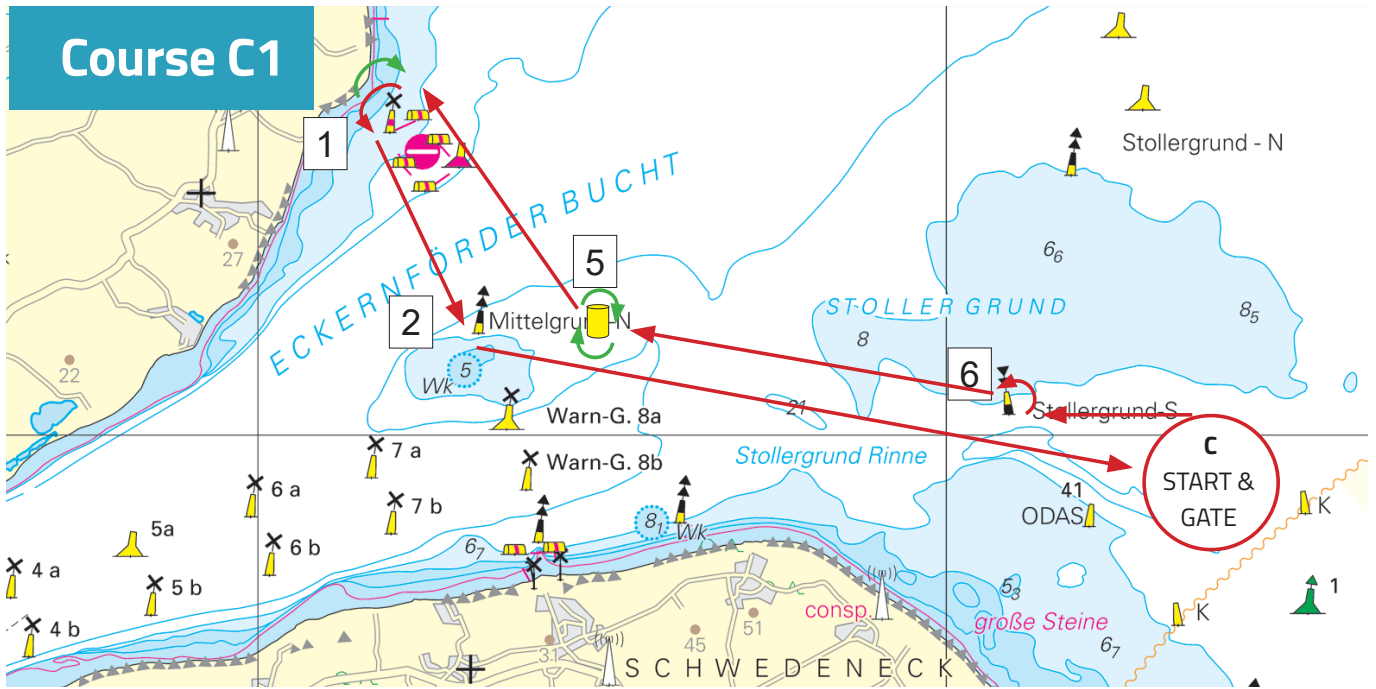




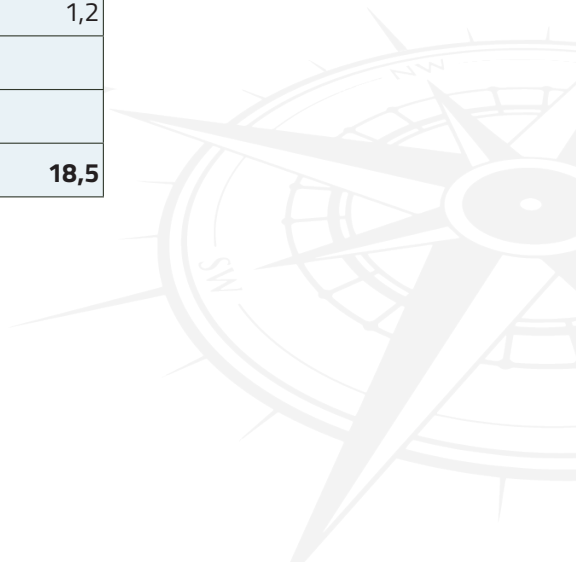
Mark	Side	approx. nm
START		
		1,2
Gate 1	pass	
		0,5
6	port	
		4,5
2	port	
		1,4
4	port	
		1,3
5	starboard	
		1,3
4	port	
		4,2
Gate 2	pass	
		1,2
FINISH		
Estimate	nautical miles	15,6

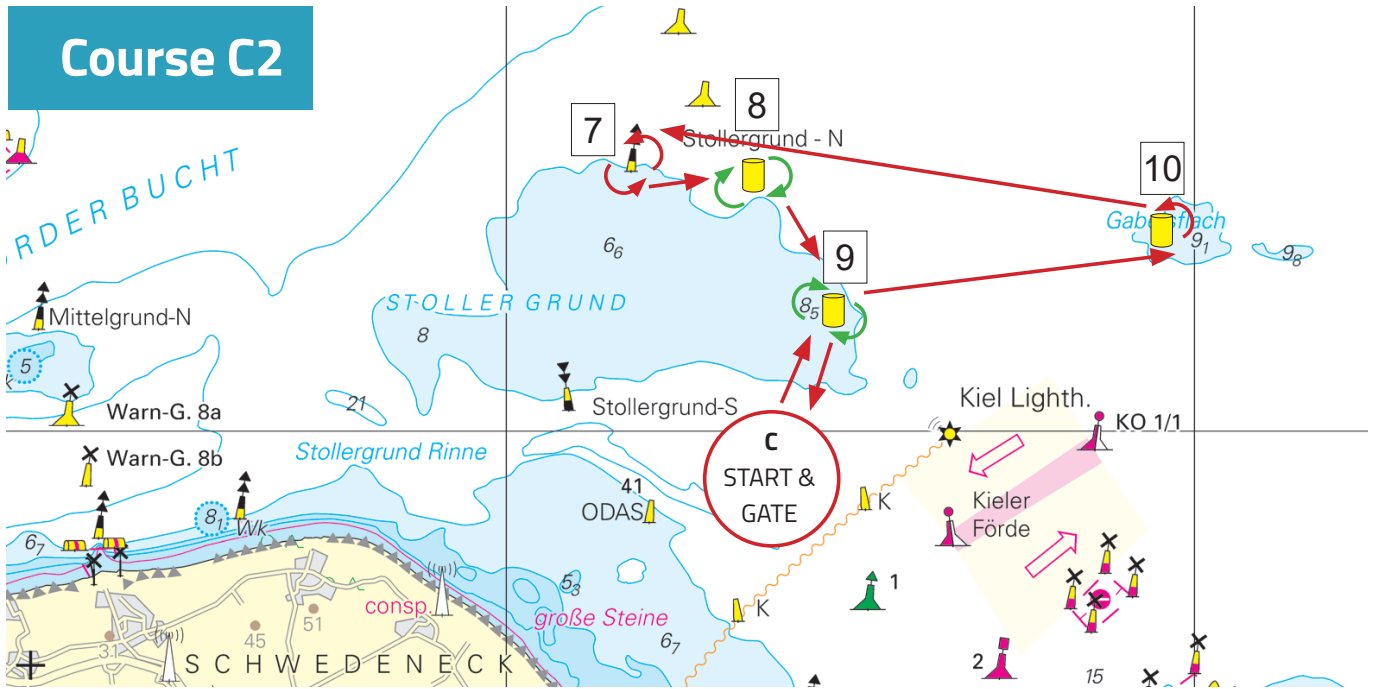


Mark	Side	approx. nm
START		
		1,2
Gate 1	pass	
		2,6
9	starboard	
		2,8
10	port	
		4,8
7	port	
		0,3
8	starboard	
		2,2
9	starboard	
		2,8
Gate 2	pass	
		1,2
FINISH		
Estimate	nautical miles	17,9



Mark	Side	approx. nm
START		
		1,2
Gate 1	pass	
		2,4
6	port	
		4,2
5	starboard	
		2,0
1	port	
		2,0
2	port	
		5,5
Gate 2	pass	
		1,2
FINISH		
Estimate	nautical miles	18,5





Mark	Side	approx. nm
START		
		1,2
Gate 1	pass	
		1,4
9	starboard	
		2,8
10	port	
		4,8
7	port	
		0,3
8	starboard	
		2,2
9	starboard	
		1,4
Gate 2	pass	
		1,2
FINISH		
Estimate	nautical miles	15,3